

Technical Data Sheet

Lync Storage Tank

Lync Storage Tanks are cost-effective, corrosion-resistant and engineered to last. The all-LDX stainless steel construction, does not require anode rods and is ideal for use at higher temperatures with heat pumps, solar thermal water heating, or other energy-efficient solutions. The optional outdoor coating allows these to be installed outdoors for further application flexibility.

Engineered to Last with Rhino

For outdoor installations in temperate climates, the optional 1/8" thick Rhino Lining coating provides a durable monolithic, protective barrier against abrasion, moisture, corrosion, and impact. It is engineered to last, ensuring your storage tank is protected from harsh environments. Outdoor tanks may be utilized to free up limited mechanical room space.

Unmatched Corrosion Resistance with Duplex Stainless Steel

Our revolutionary, engineered design combines duplex stainless-steel alloy with highly specialized and proprietary manufacturing process. The result is a long-lasting, reliable storage tank with superior corrosion-resistance. The pickled and passivated duplex stainless steel design holds up to high storage temperatures better than standard glass-lined tanks.

Save Money, Save Energy, Save the Planet

To minimize heat loss through tank walls in cold outside environments, the Lync storage tanks are wrapped with R-22 fiberglass insulation; 75% higher than the standard ASHRAE 90.1 requirement of R 12.5 for indoor tanks. The insulation further improves energy and acoustic efficiency, while providing high resistance to fire and mildew.

Monolithic Welded Construction

Factory-installed base head ring and clip systems welded directly to the tank body provide sturdy mounting to accommodate installation in areas that require extra restraint, such as high-wind locations on rooftops.

Designed for Complete Systems

The Lync storage tanks are designed with heat pump water heating systems in mind. The tanks include an integral inlet diffuser to encourage stratification and reduce heater cycling.



Warranty

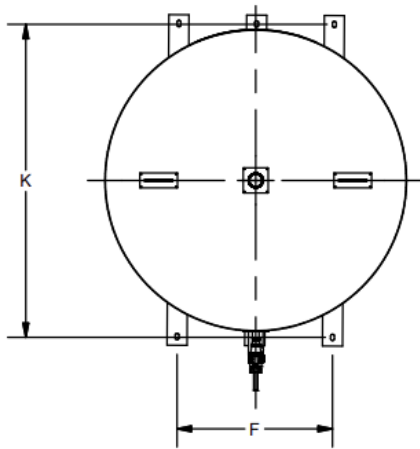
Superior materials of construction and advanced manufacturing methods enable us to provide an industry leading 25-year tank corrosion warranty.

Technical Specification

Maximum operating pressure 150 PSI (1034 kPa)
 Maximum water temperature 210°F (99°C)
 Listing/Compliance ASME HLW, ASHRAE 90.1,
 ANSI/NSF 372
 Warranty 25 year limited warranty

Dimensions

Model	Storage gal.	Dimensions in inches										Water Inlet, Outlet, Return (NPT)	Approx. Shipping weight (lb)
		A	B	C	D	E	F	G	H	J	K		
LC250S	250	50	69.50	3.56	17.88	40.13	31	56	29.25	56.31	52.50	2-1/2"	1000
LC500S	500	60.19	82.75	3.93	21.25	52.88	31	66	38.75	66.38	62.50	2-1/2"	1600
LC750S	750	71	90.13	4.63	23.25	57.88	40	78	45.38	77.25	74.50	2-1/2"	1875
LC1000S	1000	81.19	89.88	4.19	24.56	55.19	47	88	55	87.31	84.50	2-1/2"	2900



1. Description Model No. LCXXXS (EX 500 gallon would be LC500S) LCXXXSO for outdoor models

2. Additional Dimensions:

Jacket O.D. = +11 in to tank O.D.

Base channels: +6 in to jacket (Pan) O.D. = 3 in each side

Front nipples: stick out ~6.5 in past jacket

Lifting and seismic lugs: ~+4 in above top pan

Jacket Penetrations:

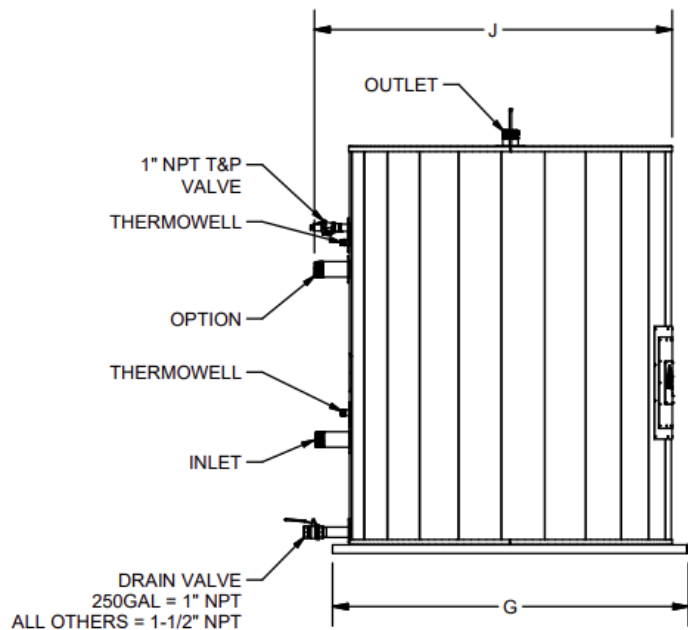
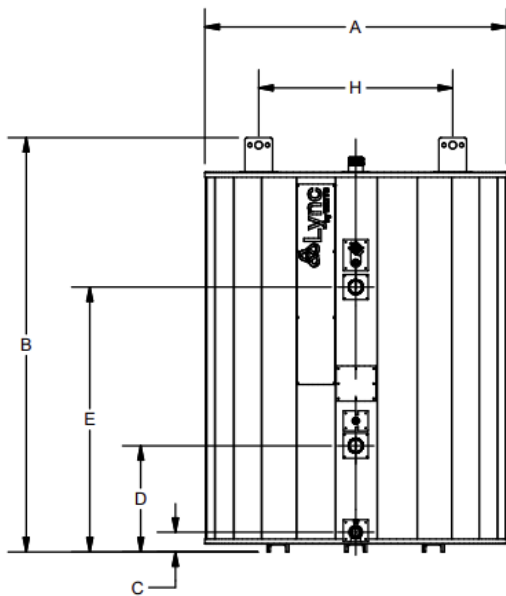
I/O/R, drain, relief, 2 thermowells, ASME data plate (accessible) mounted on the front of the tank

Back: Manway, process fitting (2 in) (both accessible)

Thermowell diameter 3/4", allows for a 1/4" probe and two 4mm openings. Connection 3/4" NPT

3. Tank supplied with Watts LF140X9. ASME relief capacity

3,085,000 BTU/hr @ 150 psi CSA relief capacity 670,000 BTU/hr



Engineered Solutions

Lync product specifications in U.S. customary units and metric are approximate and are provided for reference only. For precise measurements, please contact your local Lync Representative. Lync reserves the right to change or modify product design, construction, specifications, or materials without prior notice and without incurring any obligation to make such changes and modifications on Lync products previously or subsequently sold.

Fort Worth, TX • (817) 335-9531

11-17-2023 • © 2023 Lync