

Technical Data Sheet

Lync WQ-AS

Complete Water Quality Solutions



Engineered Solutions

Water heaters are exposed to a variety of water conditions including minerals, sediment, and chemicals. Optimal water quality will not only help mitigate the risks of many waterborne pathogens; it will improve performance, reliability, and life of the water heating system, too.

Lync WQ-AS simplifies a complex system design so it can be easily dropped into plans with the assurance that all components work together optimally to maximize the water treatment effects. WQ-AS is configurable depending on the required peak flow rate, and it is ideal for new and retrofit projects across many applications, including hotels, restaurants, gyms, hospitals, factories, multifamily, and schools.



Features

Fully Engineered and Factory-Assembled

- Tanks fastened onto a steel skid for safe and easy transportation and installation
- Plumbing, wiring, cartridge filter, UV lamps, and quartz sleeves are factory pre-assembled and installed to minimize installation time and labor
- Systems available in either a 40, 70, and 100 GPM configurations
- Multi-skid design to provide flexibility in placement of the system in tight spaces
- Reduced downtime during retrofits

Superior Safety, Reliability, and Longevity

- Prevents limescale by transforming dissolved hardness minerals into harmless, inactive microscopic crystal particles
- Scale prevention systems require little maintenance, no backwashing, no salt, and no electricity

- Extends the life of your system, and increases overall performance
- Reducing chances of biofilm formation by filtering water for sediments, preventing scale formation, and inactivation of legionella
- Highly effective in disinfecting water for Legionella present in domestic water systems*
- Reduces water heating costs by controlling limescale formation

Standard Subsystems

- AquaSolve System: includes media assisted crystallization to prevent the scale formation
- Cartridge Filtration System: includes filter housing, one installed cartridge, and one spare replacement cartridge
- UV Disinfection System includes stainless steel reactor chamber, quartz sleeve, UV lamps, and full color touch screen controls with 4-20 mA option for BAS integration through Modbus protocol

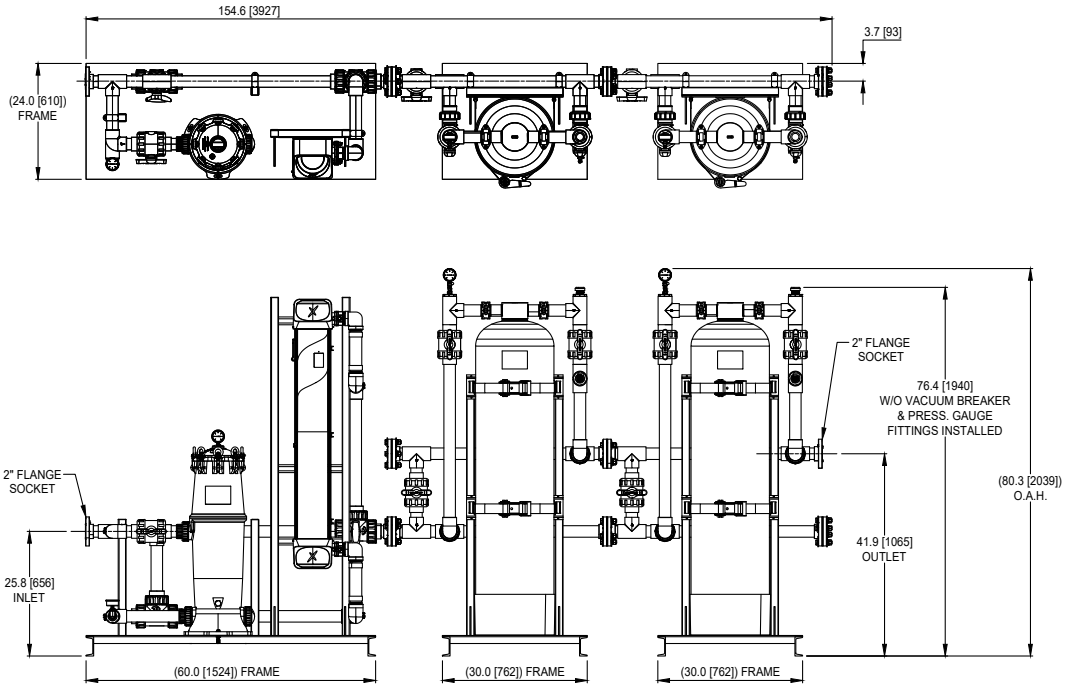
*Tested and validated for minimum of 6-log reduction of Legionella bacteria

Technical Data

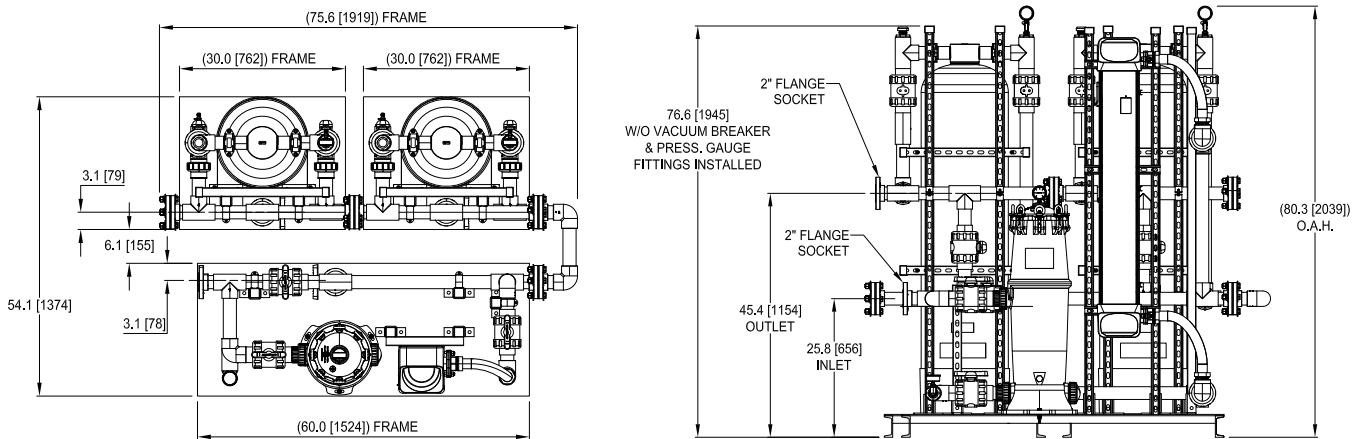
Unit	WQAS-040-S WQAS-040-C	WQAS-070-S WQAS-070-C	WQAS-100-S WQAS-100-C
Performance and Specs			
Number & size of Scale Prevention Tanks	1 – 75 GPM	1 – 75 GPM	2 – 75 GPM
Type of Cartridge Filtration	1 - LCH-150		
Number of Filter Cartridges	2 (1 spare) - LCB-150-P5		
Number of UV Systems	1 – UV-H 750P	1 – UV-H 1000P	1 – UV-H 1000P
Peak Flow Rate [GPM]	40	70	100
Max Operating Pressure [PSI]	125		
Max Operating Temperature [°F]	100		
Max Hardness	30 Grains (513 ppm as CaCO ₃)		
Max Iron	0.3 ppm		
Total Phosphates	3 ppm or less		
Max Manganese	0.05 ppm		
Turbidity	< 5 NTU		
pH	6.5 – 8.5		
Total Dissolved Solids	1500 ppm or less		
Max Copper	1.3 ppm		
Total suspended solids	10 ppm		
Max Silica	20 ppm		
Max Ambient Temperature/Humidity	122 °F / 95% Relative Humidity (non-condensing)		
Min. UVT for 40mJ/cm ² Dose / 4-20 mA Modbus connection	95%		
Electrical Data¹			
Voltage [V], Frequency [Hz]	120VAC, 50/60 Hz		
4-20 mA Modbus Connection	Available for -C models		
Dimensions			
Linear Placement			
Width [in]	110		155
Depth [in]	24		
Height [in]	81		
U-Shape Placement			
Width [in]	71		99
Depth [in]	54		
Height [in]	81		
Shipping Weight [lbs]	800	830	1200

1. Electrical data for single UV Disinfection System

Dimensions



Linear Placement



U-Shape Placement



Engineered Solutions

Fort Worth, TX • (817) 335-9531

© 2025 Lync