

Technical Data Sheet



WQ-AS

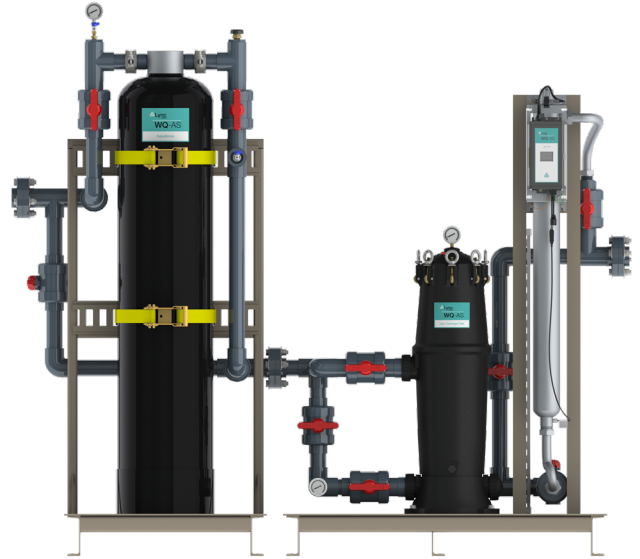
Complete Water Quality Solutions

Engineered Solutions

Lync WQ-AS is a complete, fully engineered multi-barrier packaged system that optimizes your system's water quality by integrating scale prevention, sediment filtration and UV disinfection. Expertly designed by one manufacturer, Lync WQ-AS is compact, pre-assembled, and configurable system available in 50 or 100 GPM.

Because water heaters are exposed to a wide variety of water conditions including minerals, sediment, chemicals, and other threats, ensuring your system has optimal water quality will not only help mitigate the risks of many water-borne pathogens, but it will also increase the performance, reliability, and life of your commercial water heating system.

Lync WQ-AS simplifies a complex system design so it can be easily dropped into plans. With the ability to select the right configuration for each application, you can be assured that all components will work together to produce an optimal water quality solution. The WQ-AS system is configurable depending on the required system flow rate making it a perfect solution for both new and retrofit buildings across a variety of applications including hotels, restaurants, gyms, hospitals, factories, apartments, and schools.



Features

Fully Engineered and Factory-Assembled

- Tanks fastened onto a steel skid for safe and easy transportation and installation
- Plumbing and wiring are factory pre-assembled to minimize installation time and labor
- Systems available in either a 50 GPM or 100 GPM configurations
- Lower construction costs for new installations
- Reduced downtime during retrofits

Superior Safety, Reliability, and Longevity

- Prevents scale by transforming dissolved hardness minerals into harmless, inactive microscopic crystal particles
- Scale prevention tanks require very little maintenance, no backwashing, no salt, and no electricity

- Extends the life of your system, and increases overall performance
- Reduces sediment in water
- Highly effective in inactivating many species of disease-causing micro-organisms
- Reduces water heating costs

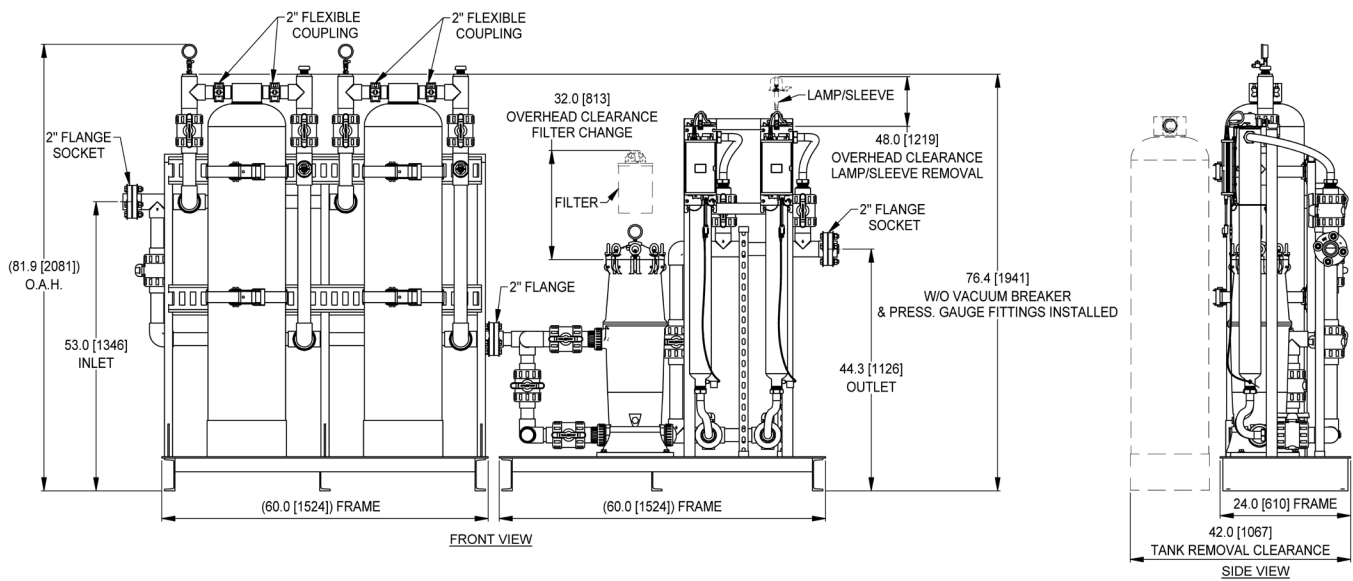
Standard Subsystems

- Scale Prevention System: includes TAC media to prevent the scale formation
- Cartridge Filtration System: includes filter housing, one installed cartridge, and one spare replacement cartridge
- UV Disinfection System: includes stainless steel reactor chamber(s), quartz sleeve(s), UV lamp(s), and full color touch screen controls with BAS integration through Modbus protocol

Technical Data

Unit	WQAS-050-D	WQAS-100-D
Performance and Specs		
Number & size of Scale Prevention Tanks	1 – 14"x65"	2 – 14"x65"
Number and type of Cartridge Filtration	1 – 5 micron pleated	
Number of UV Systems	1	2
Peak Flow Rate [GPM]	50	100
Max Operating Pressure [PSI]	125	
Max Operating Temperature [°F]	100	
Max Hardness	30 Grains (513 ppm as CaCO ₃)	
Max Iron	0.3 ppm	
Total Phosphates	3 ppm or less	
Max Manganese	0.05 ppm	
Turbidity	< 5 NTU	
pH	6.5 – 8.5	
Total Dissolved Solids	1500 ppm or less	
Max Copper	1.3 ppm	
Total suspended solids	10 ppm	
Max Silica	20 ppm	
Max Ambient Temperature/Humidity	122 °F / 95% Relative Humidity (non-condensing)	
UV Transmittance (UVT)	95% UVT	
Electrical Data¹		
Voltage [V], Frequency [Hz]	120 – 240 V, 50/60 Hz	
Dimensions		
Width [in]	78	132
Depth [in]	24	24
Height [in]	82	82
Shipping Weight [lbs]	700	1100

1. Electrical data for single UV Disinfection System



Engineered Solutions

Fort Worth, TX • (817) 335-9531

© 2021 Lync