

Technical Data Sheet

WQ-UV

Complete Water Quality Solutions



Engineered Solutions

Lync WQ-UV is a complete, fully engineered water quality optimization solution that features sediment filtration and UV disinfection. Expertly designed by one manufacturer, WQ-UV is a compact, pre-assembled, and configurable system available in 50 or 100 GPM.

Because water heaters are exposed to a wide variety of water conditions including minerals, sediment, chemicals, and other threats, ensuring your system has optimal water quality will increase the performance, reliability, and life of your commercial water heating system.

Lync WQ-UV simplifies a complex system design so it can be easily dropped into plans. With the ability to select the right configuration for each application, you can be assured that all components will work together to produce an optimal water quality solution. WQ-UV is configurable depending on the required system flow rate making it a perfect solution for both new and retrofit buildings across a variety of applications including hotels, restaurants, gyms, hospitals, factories, apartments, and schools.



Features

Fully Engineered and Factory-Assembled

- Components fastened onto a steel skid for safe and easy transportation and installation
- Plumbing and wiring are factory pre-assembled to minimize installation time and labor
- Systems available in 50 GPM or 100 GPM configurations
- Lower construction costs for new installations
- Reduced downtime during retrofits

Superior Safety, Reliability, and Longevity

- Extends the life of your system, and increases overall performance
- Highly effective in inactivating many species of disease-causing micro-organisms

- Reduces sediment in water
- The corrosion resistant polypropylene construction of the cartridge filter systems makes it an ideal choice in corrosive environments with aggressive water
- Decreases water heating costs

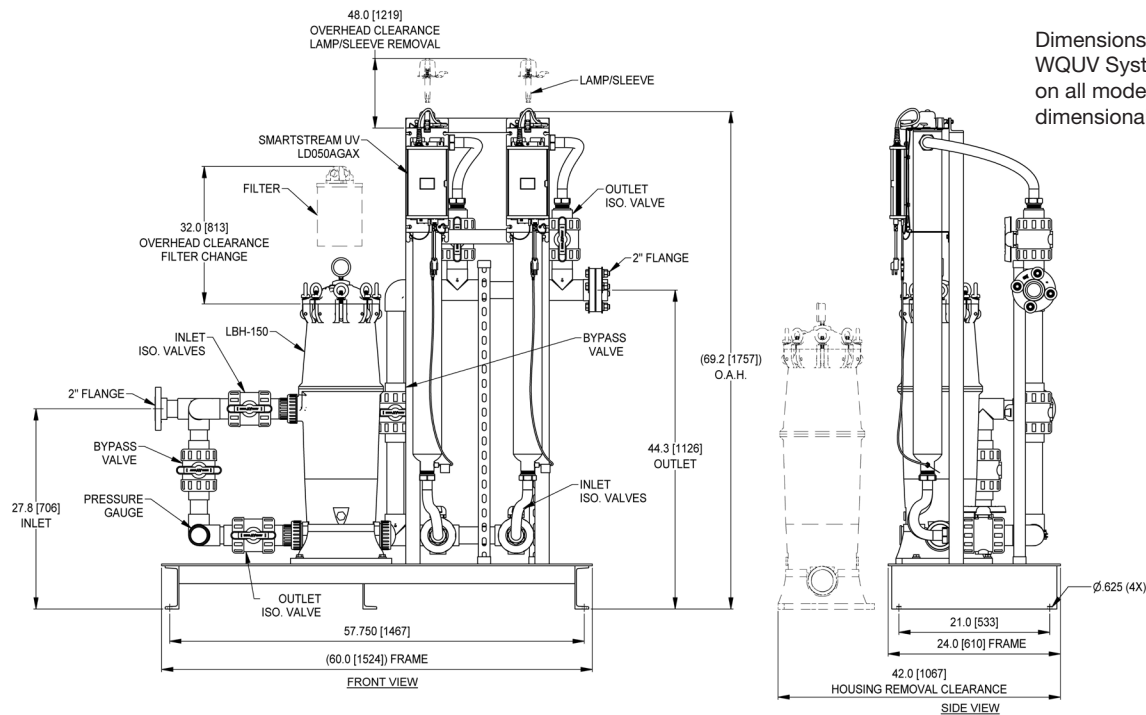
Standard Subsystems

- Cartridge Filtration System: includes filter housing, one installed cartridge, and one spare replacement cartridge
- UV Disinfection System: includes stainless steel reactor chamber(s), quartz sleeve(s), UV lamp(s), and full color touch screen controls with BAS integration through Modbus protocol

Technical Data

Unit	WQUV-050-D	WQUV-100-D
Performance		
Number and type of Big Bubba Cartridge	1 – 5 micron pleated	
Number of UV Systems	1	2
Peak Flow Rate [GPM]	50	100
Max Operating Pressure [PSI]	125	
Max Operating Temperature [°F]	125	
Max Hardness ²	7 Grains (120 mg/L as CaCO3)	
Max Iron	0.3 ppm	
Max Manganese	0.05 ppm	
Total suspended solids	< 10 ppm	
Max Ambient Temperature/Humidity	122 °F / 95% Relative Humidity (non-condensing)	
UV Transmittance (UVT)	95% UVT	
Electrical Data ³		
Voltage [V], Frequency [Hz]	120 – 240 V, 50/60 Hz	
Dimensions w/o Brine Tank(s)		
Width [in]	48	60
Depth [in]	24	24
Height [in]	70	70
Shipping Weight [lbs]	650	750

1. Electrical data for single Lync UV System
2. Value displayed is for when the system is not used in conjunction with a water softener or approved scaled prevention technology.



Dimensions of a 100 GPM WQUV System. For dimensions on all models, please refer to dimensional drawings.



Engineered Solutions

Fort Worth, TX • (817) 335-9531

© 2022 Lync