

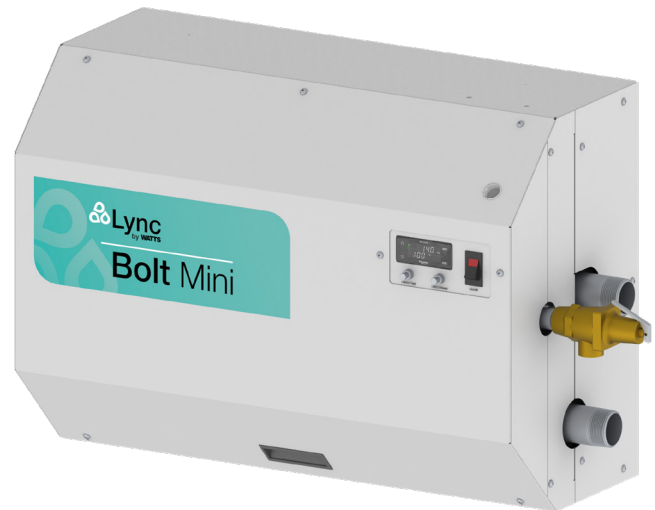
## Technical Data Sheet

# Lync Bolt Mini Electric Water Heater

Bolt Mini is a compact yet powerful electric water heater engineered to support a wide range of electrification applications. Whether used with heat pumps as a building recirculation heater, as a sidearm unit for system backup, a booster heater, or a standalone solution, Bolt Mini delivers dependable performance across diverse scenarios.

Constructed with all-LDX duplex stainless steel, it eliminates the need for anode rods and excels in high-temperature environments, making it ideal for integration with heat pumps, solar thermal systems and other energy-efficient technologies.

Designed for durability and ease of maintenance, the Bolt Mini offers a long-lasting, reliable water heating solution tailored for modern, sustainable building systems.



## Features and Benefits

- 480V, 3-phase standard construction
- Incoloy sheathed heating elements
- Superior corrosion resistance – no tank lining needed
- No anode rods or impressed current anodes are required
- More durable than 316L or 304L stainless steel in potable water
- Highly resistant to chloride stress corrosion cracking
- Inherently resistant to aqueous corrosion in potable water
- Leg kit for floor mounting (optional equipment)
- Modbus communication through RS485 cable connection

## Certification & Standards

- ETL listed to ANSI/CSA safety standards
- ASME, section IV, part HLW stamped and National Board Registered



## Combine with Heat Pump Water Heaters

Bolt Mini and its unique design and features can serve as the perfect addition to a heat pump system to maximize the ability to deliver domestic hot water efficiently and reliably by providing backup, booster, or recirculation heating.

## Unmatched Corrosion Resistance with Duplex Stainless Steel

Our revolutionary engineered design combines duplex stainless steel alloy with highly specialized and proprietary manufacturing process. The result is a long-lasting, reliable water heater with superior corrosion-resistance.

## Warranty

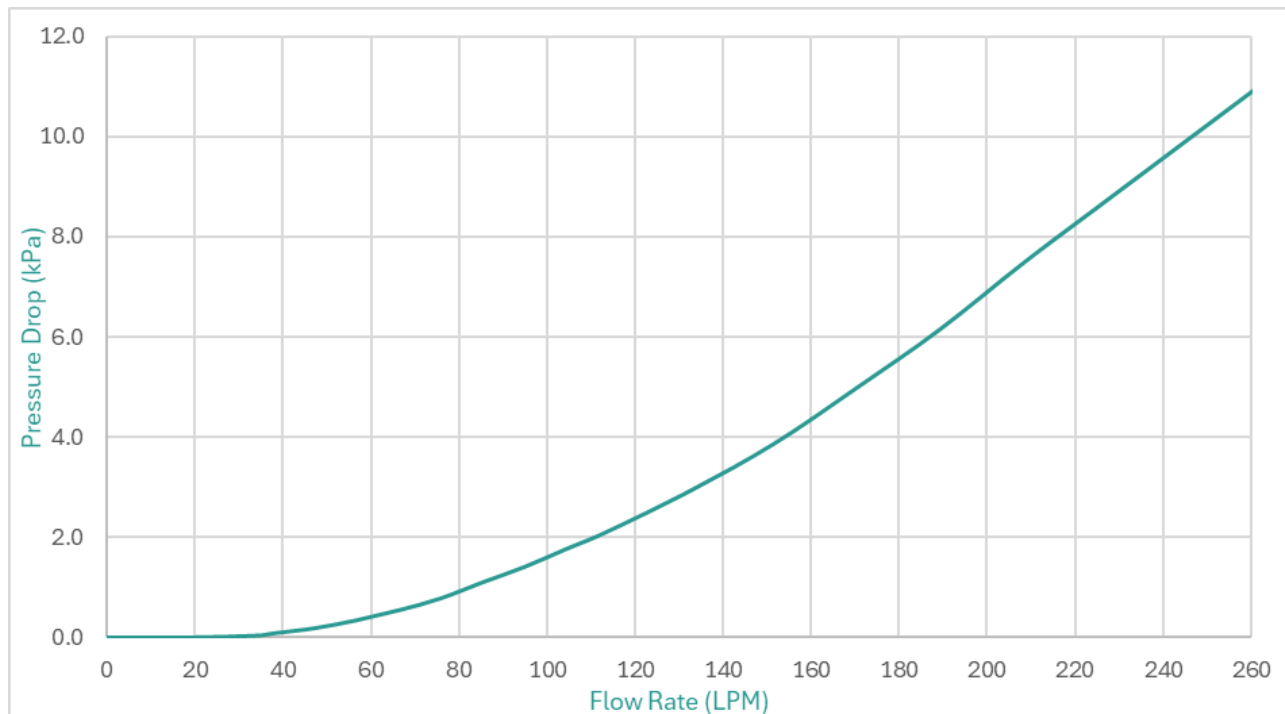
Proprietary design equipped with durable material and quality craftsmanship enable us to provide an industry leading warranty of 10 years.

## Technical Specifications

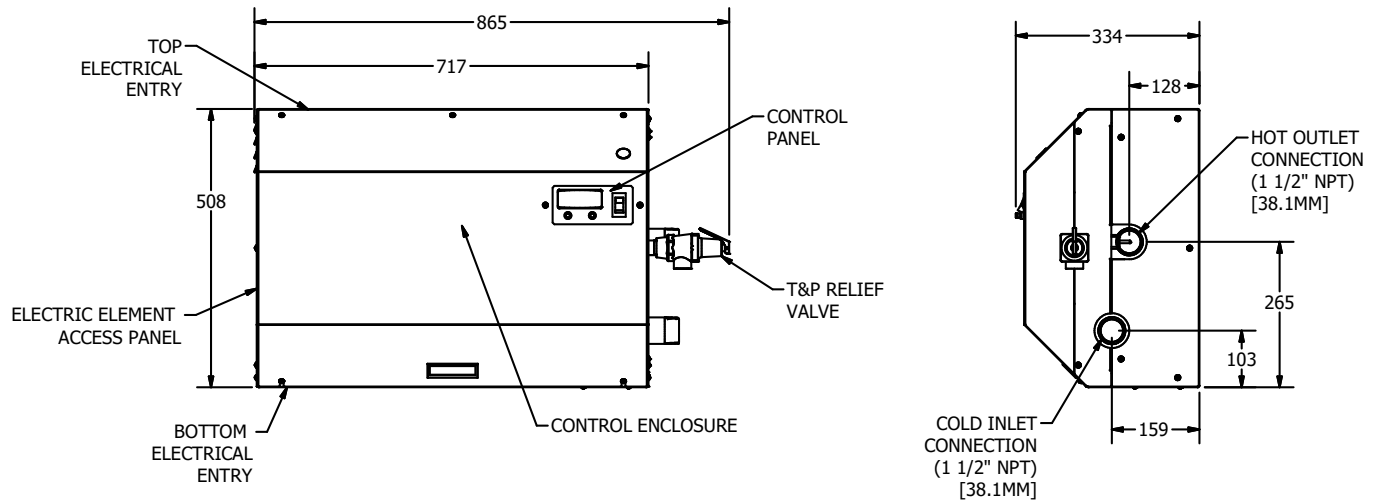
Model	LLAR12	LLAR18	LLAR24	LLAR30	LLAR36	LLAR45	LLAR54
kW Input	12	18	24	30	36	45	54
Electrical Supply	480 V, 3-phase, 60 Hz						
Current (Amps)	16	24	31	38	45	56	66
Hot Water Output 4.4-48.9C (LPH)	231	344	465	579	696	870	1045
Hot Water Output 4.4-60.0C (LPH)	185	280	371	465	556	696	836
MAWP (bar)	10.3						
Maximum Flow (LPM)	265						
Water Inlet & Outlet (mm)	38.1						
Shipping Weight (kg)	64.4	64.4	66.7	66.7	66.7	68.9	68.9
Wet Weight (kg)	94.8	94.8	97.1	97.1	97.1	99.3	99.3

Model	kW Rating	Maximum Flow Rate at Temperature Rise (Lpm @ °C ΔT)								
		5.0°C	10.0°C	15.0°C	20.0°C	30.0°C	40.0°C	50.0°C	60.0°C	70.0°C
LLAR12kW	12	34.3	17.1	11.4	8.6	5.7	4.3	3.4	2.9	2.4
LLAR18kW	18	51.4	25.7	17.1	12.9	8.6	6.4	5.1	4.3	3.7
LLAR24kW	24	68.6	34.3	22.9	17.1	11.4	8.6	6.9	5.7	4.9
LLAR30kW	30	85.7	42.9	28.6	21.4	14.3	10.7	8.6	7.1	6.1
LLAR36kW	36	102.9	51.4	34.3	25.7	17.1	12.9	10.3	8.6	7.3
LLAR45kW	45	128.6	64.3	42.9	32.1	21.4	16.1	12.9	10.7	9.2
LLAR54kW	54	154.3	77.1	51.4	38.6	25.7	19.3	15.4	12.9	11.0

## Pressure Drop



## Dimensions In mm



Engineered Solutions

Lync product specifications in U.S. customary units and metric are approximate and are provided for reference only. For precise measurements, please contact your local Lync Representative. Lync reserves the right to change or modify product design, construction, specifications, or materials without prior notice and without incurring any obligation to make such changes and modifications on Lync products previously or subsequently sold.

Fort Worth, TX • (817) 335-9531

2-18-2026 • © 2026 Lync